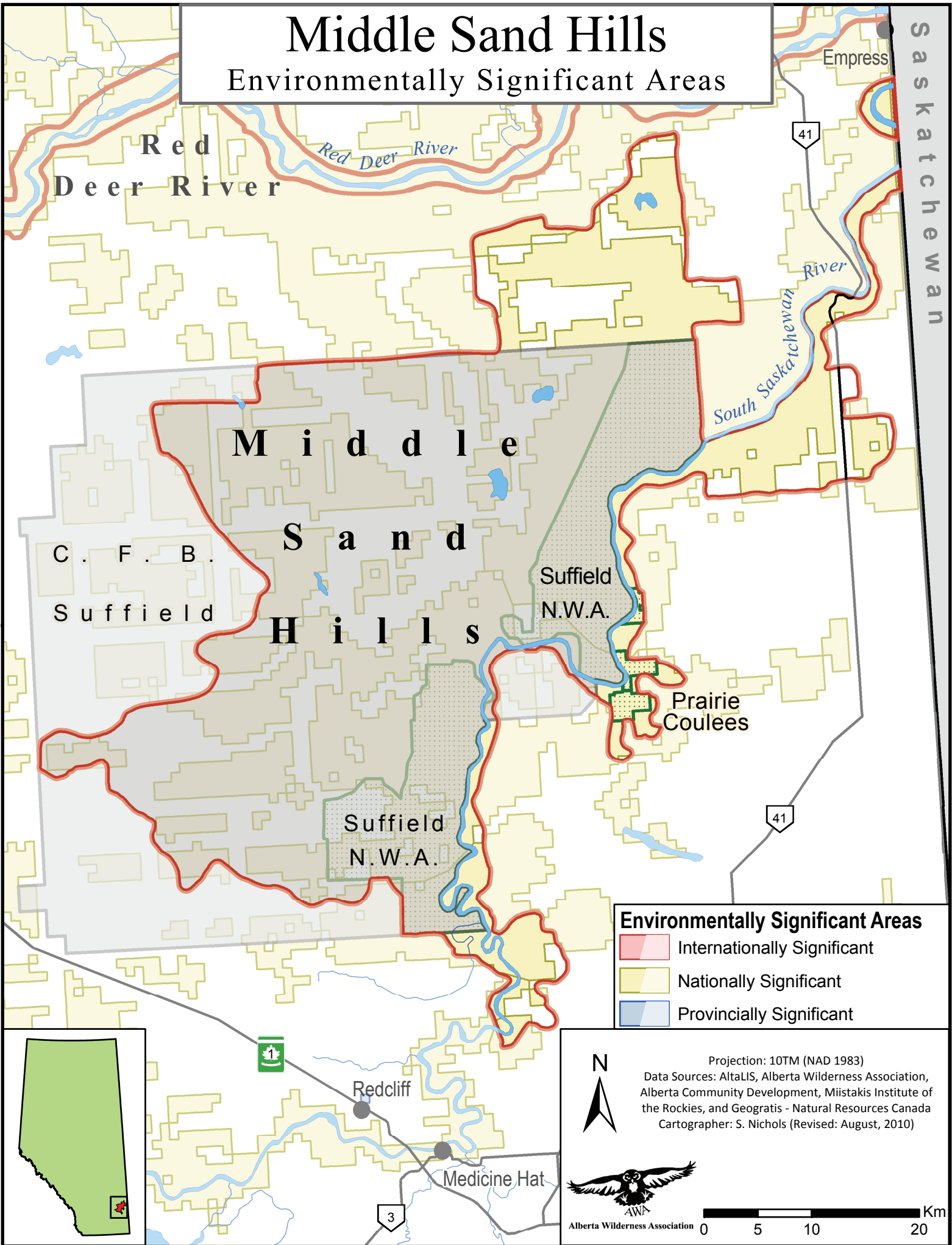


Middle Sand Hills

Environmentally Significant Areas



Environmentally Significant Areas

- Internationally Significant
- Nationally Significant
- Provincially Significant



Projection: 10TM (NAD 1983)
 Data Sources: AltaLIS, Alberta Wilderness Association, Alberta Community Development, Miistakis Institute of the Rockies, and Geogratis - Natural Resources Canada
 Cartographer: S. Nichols (Revised: August, 2010)



Alberta Wilderness Association

