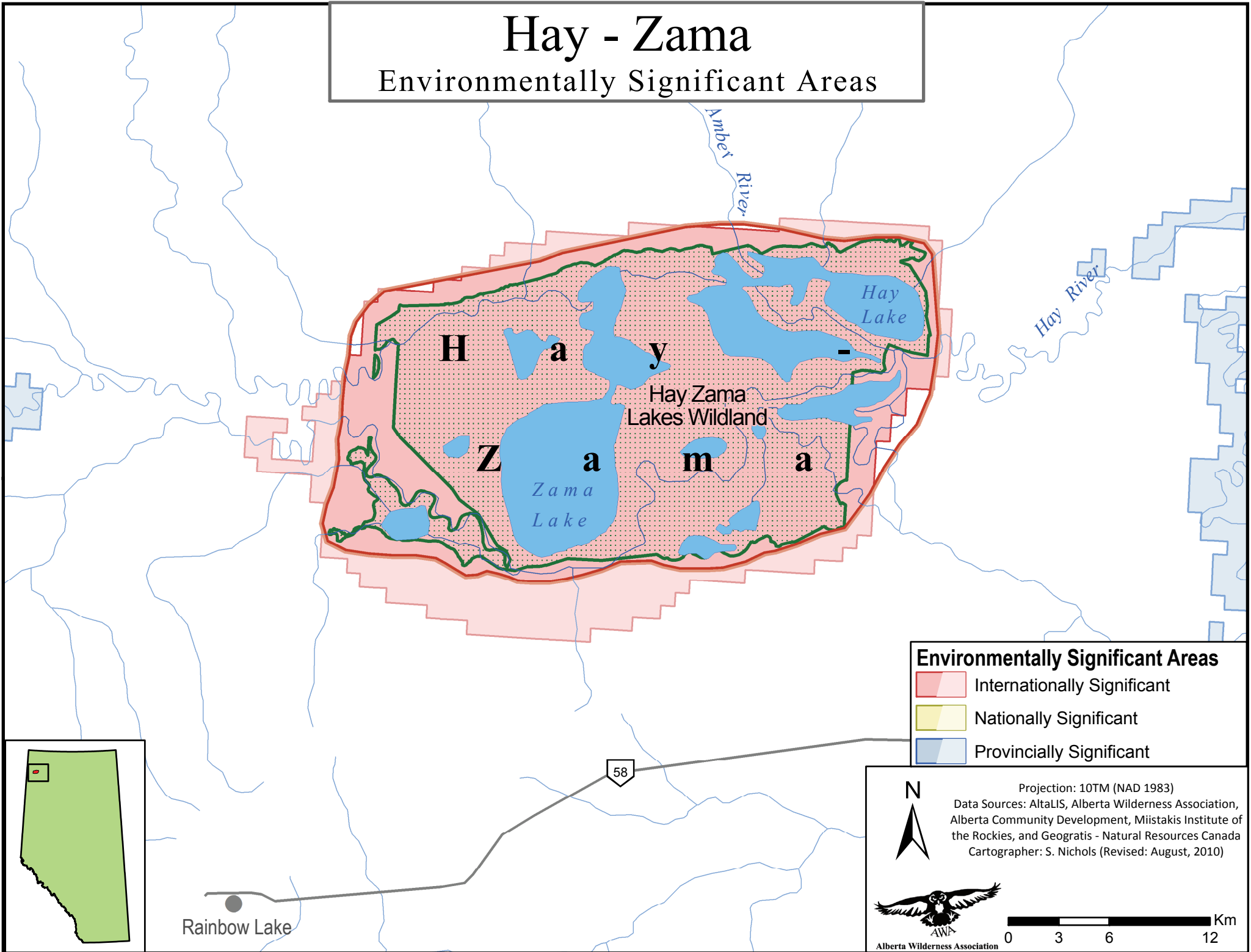


Hay - Zama

Environmentally Significant Areas



Environmentally Significant Areas

- Internationally Significant
- Nationally Significant
- Provincially Significant

Projection: 10TM (NAD 1983)
Data Sources: AltaLIS, Alberta Wilderness Association, Alberta Community Development, Miistakis Institute of the Rockies, and Geogratis - Natural Resources Canada
Cartographer: S. Nichols (Revised: August, 2010)

