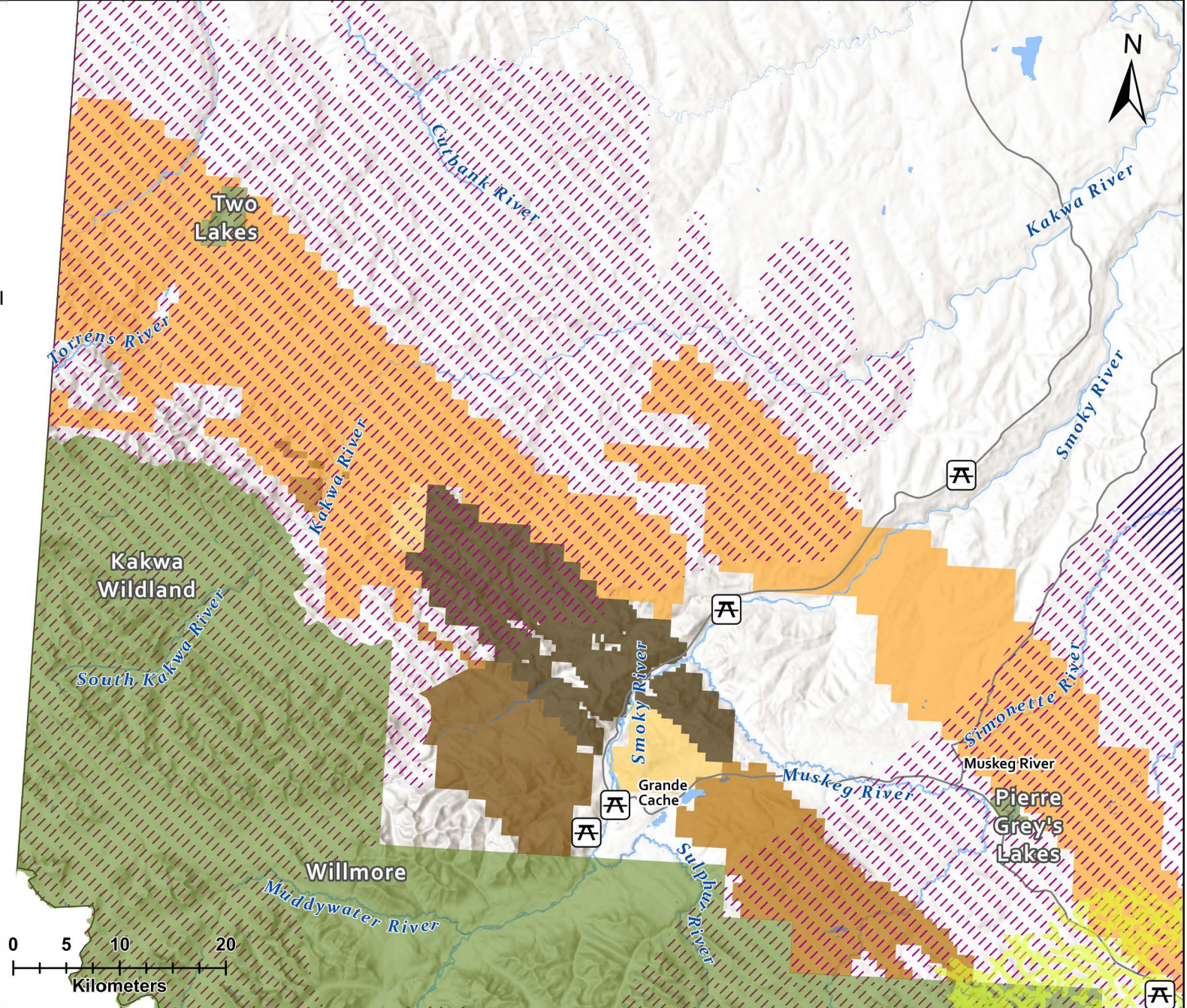




Legend

- Recreation Sites
- Aquatic Species At Risk Critical Habitat
- Parks and Protected Areas
- Woodland Caribou Ranges**
 - Boreal
 - Southern Mountain
- Active Coal Leases**
 - CST CANADA COAL LIMITED
 - HORN RIDGE RESOURCES LTD.
 - MANCAL COAL INC
 - PEACE RIVER COAL INC.
 - SUMMIT COAL INC.



Active Coal Leases in the Peace/Slave River Basin

Five companies hold active coal leases in and around the Kakwa and Little Smoky regions, within the headwaters of the Peace River. They overlap with the Southern Mountain Woodland Caribou's range, a planning region that contains critical habitat for the species, and where at least 65 percent of the area must remain intact for the species' survival. Numerous parks, protected areas, and recreation sites can also be found throughout the region. Downstream communities include Grande Cache, Grande Prairie, Fort Vermillion, Peace River, and the Duncans, Paddle Prairie, and Sturgeon Lake Nations.

Projection: NAD 1983 10 TMAEP Forest
Data Sources: AEM, AEPA, DFO, NRC, Esri, USGS

Cartographer: K. Halvorson
Date: February 6, 2025