

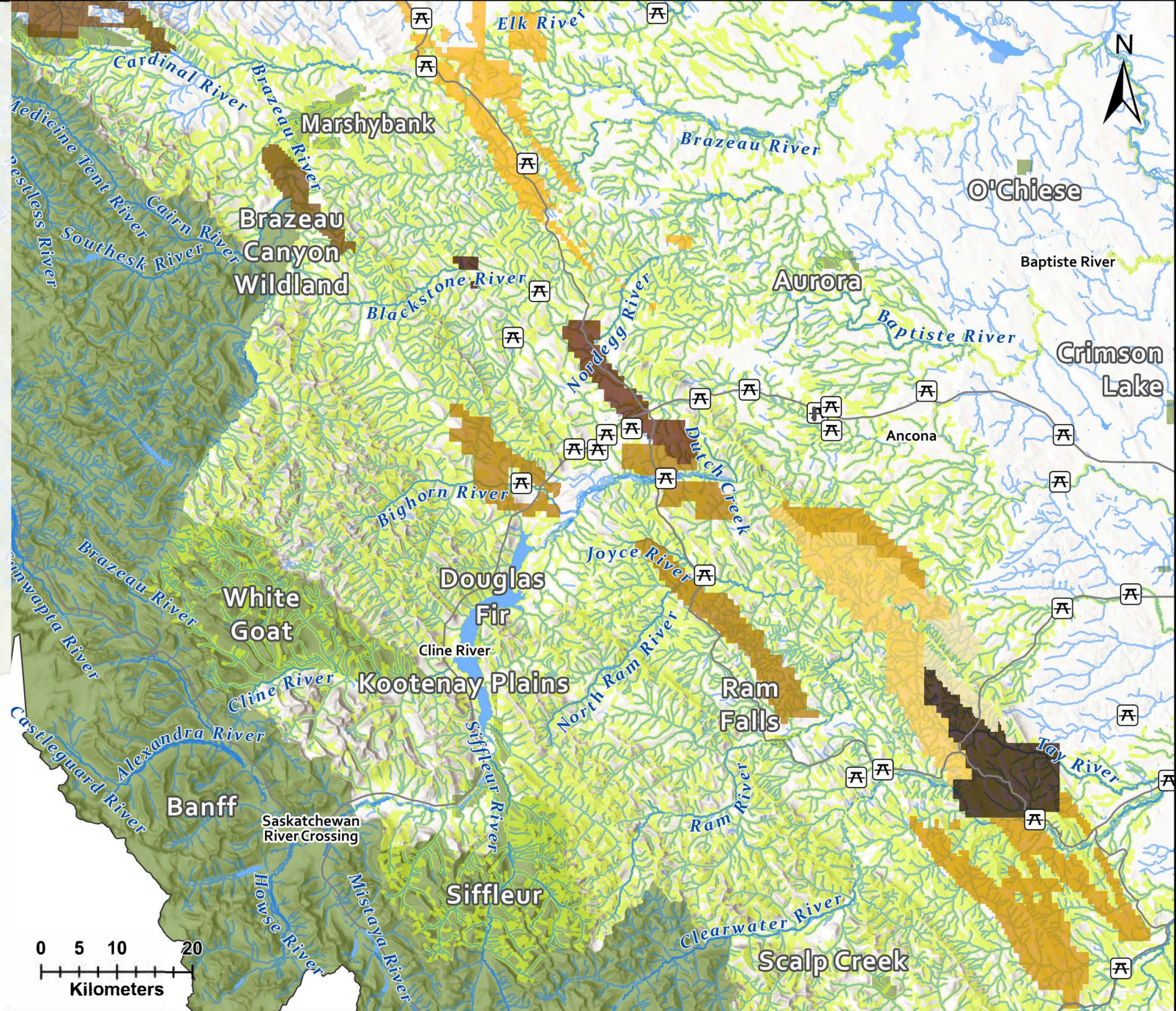
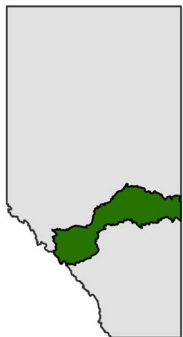


## Legend

- Parks and Protected Areas
- Watercourses
- ⌘ Recreation Sites
- Aquatic Species At Risk Critical Habitat

## Active Coal Leases

- BLACK EAGLE MINING CORPORATION
- BLAIRMORE COAL CANADA LTD.
- CONSOL OF CANADA LLC
- EVR OPERATIONS LIMITED
- OROS COAL CANADA LTD.
- PHALANX COAL CANADA LTD.
- PRAIRIE MINES & ROYALTY ULC
- RAM RIVER COAL CORP.
- WHITERABBIT RESOURCES LTD.



### Active Coal Leases in the North Saskatchewan River Basin

Nine companies hold active coal leases throughout the Bighorn region and within the headwaters of the North Saskatchewan River. Many tributaries are designated as critical habitat for species at risk, like the threatened bull trout. Numerous parks, protected areas, and recreation sites can also be found throughout the region. Downstream communities include Edmonton, Drayton Valley, Fort Saskatchewan, and the Saddle Lake and Stoney Plain Nations.

Projection: NAD 1983 10TM AEP Forest  
 Data Sources: AEM, AEPA, DFO, NRC, Esri, USGS

Cartographer: K. Halvorson  
 Date: February 6, 2025