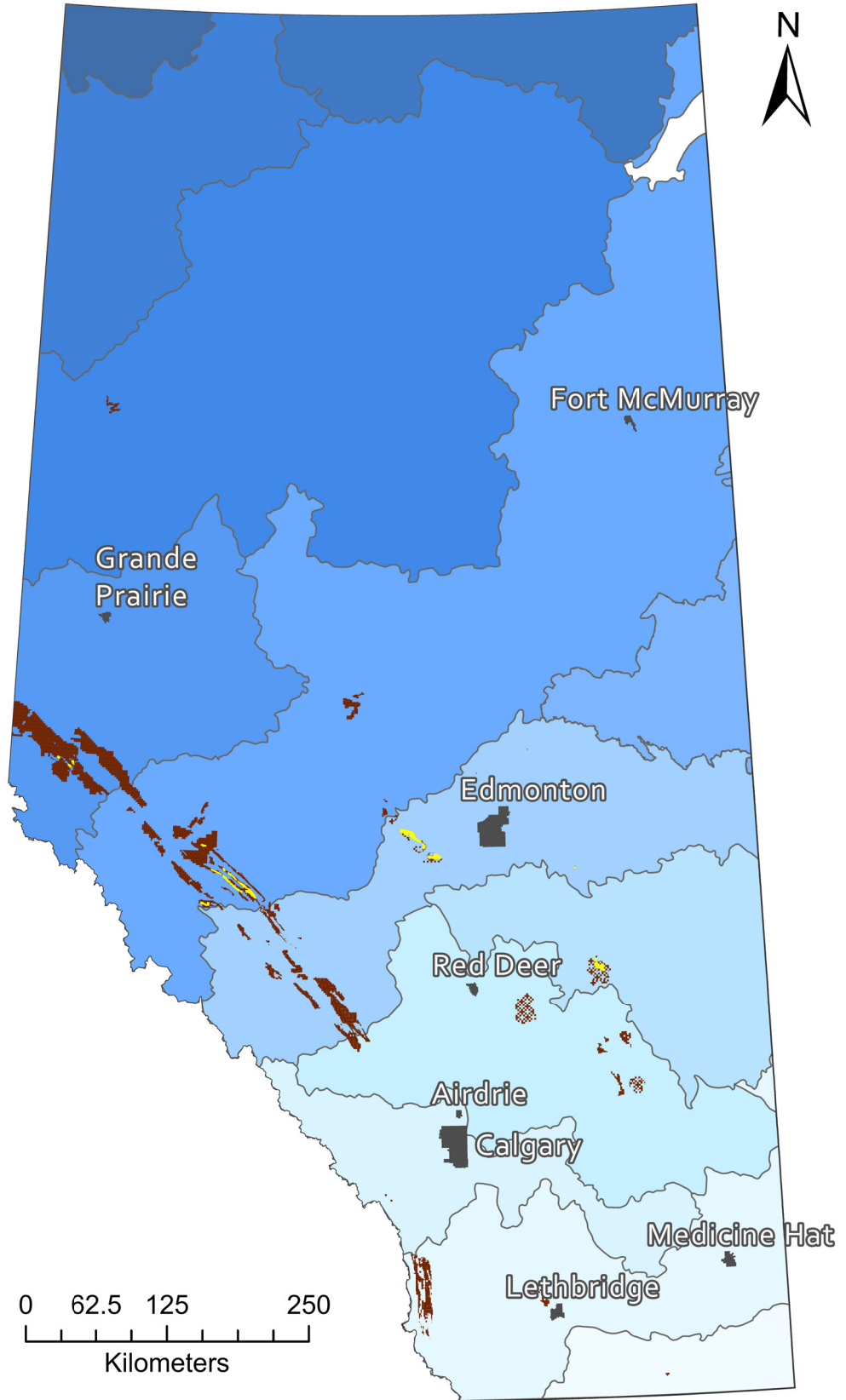




## Legend

-  Cities
-  Active Coal Leases
-  Active Coal Mine Licences
- River Basins**
-  Central Liard - Petitot
-  Slave River
-  Hay River
-  Peace River
-  Smoky
-  Athabasca River
-  Churchill River
-  North Saskatchewan
-  Battle
-  Red Deer
-  Bow
-  Lower South Saskatchewan
-  Milk



## Active Coal Leases and Licenses in Alberta's River Basins

As a result of the Minister of Energy and Mineral's latest ministerial order (M.O. 003/2025), the Eastern Slopes are open for further coal exploration and development. The M.O. re-activated and extended any coal leases suspended under the previous moratorium, including those held by 19 companies in sensitive and important Category 2 areas. Active leases are largely concentrated in the headwaters of the Smoky, Athabasca, North Saskatchewan, and South Saskatchewan River Basins, upstream of well over a third of Alberta's total population. Active licenses captures both the footprint of mines currently operating, as well as those in the process of reclamation.

Projection: NAD 1983 10 TM  
AEP Forest  
Data Sources: AEM, AEPA,  
DFO, NRC, Esri, USGS  
Cartographer: K. Halvorson  
Date: February 10, 2025