

Update: What's Happening in the Castle Parks?

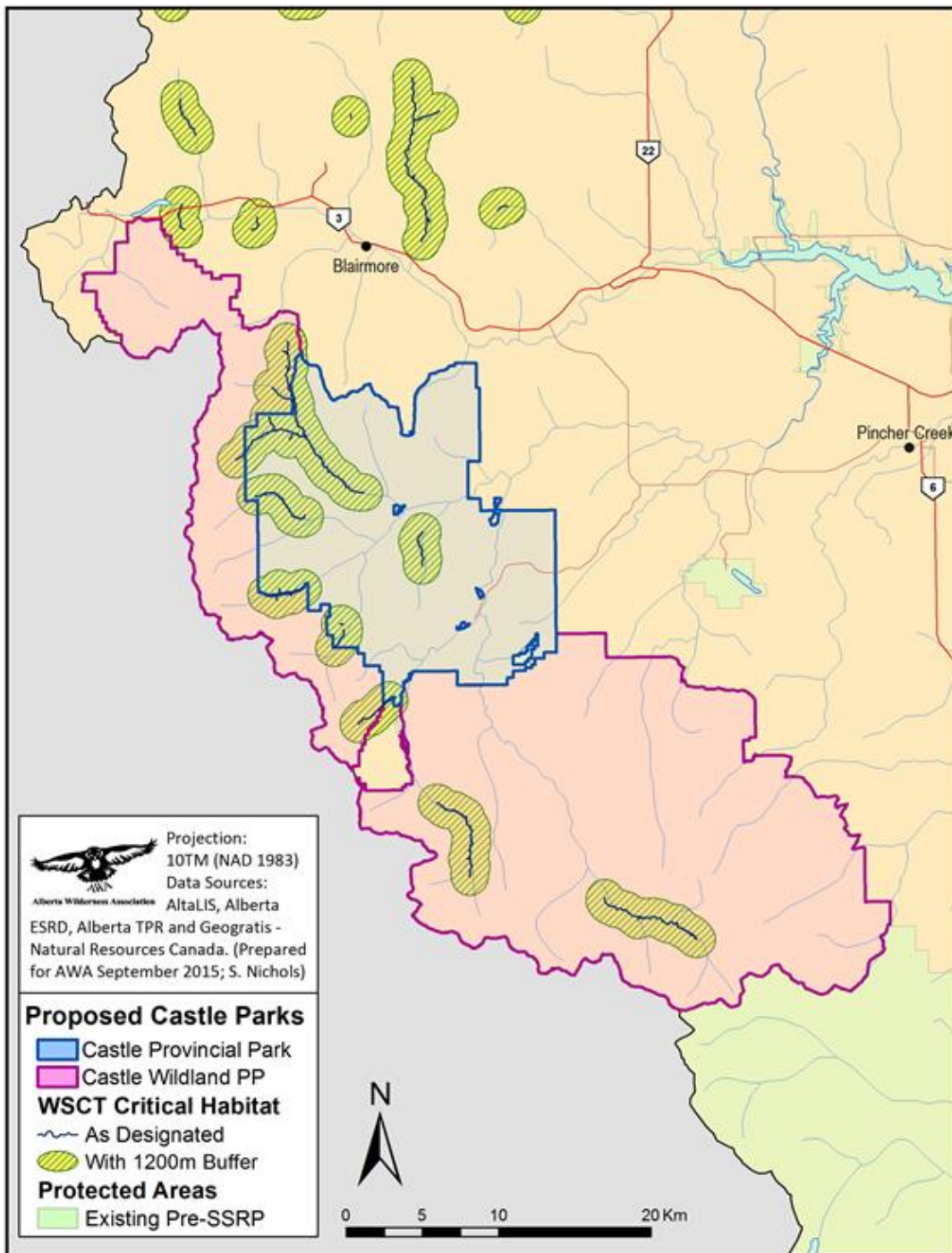
November 12, 2019



It seems this may be an important time to write to the Government of Alberta in support of the Castle's wilderness values, its critical habitat and the ecological connectivity it provides to the larger landscape. In particular, how important it is to complete the phase-out of motorized trails to help recover threatened populations of westslope cutthroat trout (WSCT).

The map below shows designated critical habitat for WSCT in the Castle Parks. **Currently, the Castle's motorized trail network overlaps with nearly all designated habitat in Castle Provincial Park.**





Map © AWA FILES, 2015.

In July 2019, the Government of Alberta paused the closure of motorized trails in the Castle Parks.

Some facts:

- As of July 2019, [132 km of motorized trails remain within the Castle Parks](#). These trails are located within critical habitat for westslope cutthroat trout.

- The implementation of the *Castle Management Plan*, which was approved in 2018 and included the phase-out of motorized trails, has been paused. You can read AWA's letter on this [here](#).
- Federal penalties for each count of destroying any part of critical habitat apply to this region and include fines of up to \$1,000,000 or imprisonment for up to 5 years.
- Minister Nixon visited southwest Alberta in September to speak with stakeholders about the area's values, management and land-uses; stakeholders included landowners, lease holders, recreation groups, and environmental organizations. The Ministry continues to seek feedback on how to manage the area.

Please take a minute to send an email to the Minister of the Environment and let him know how important westslope cutthroat trout and protecting critical habitat are to you:

Honourable Jason Nixon

Minister of Environment and Parks

By e-mail: aep.minister@gov.ab.ca

We always appreciate if you copy AWA, in this case Grace Wark at gwark@abwild.ca

Thanks for letting the Minister know you care about Castle wilderness and vital habitats!



Dedicated to the conservation of wilderness and completion of a protected areas network, AWA inspires communities to care for Alberta's wild spaces through awareness and action.

[Donate](#)

Copyright © 2019 Alberta Wilderness Association, All rights reserved.

Want to change how you receive these emails?

You can [update your preferences](#) or [unsubscribe from this list](#).