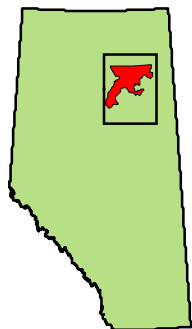
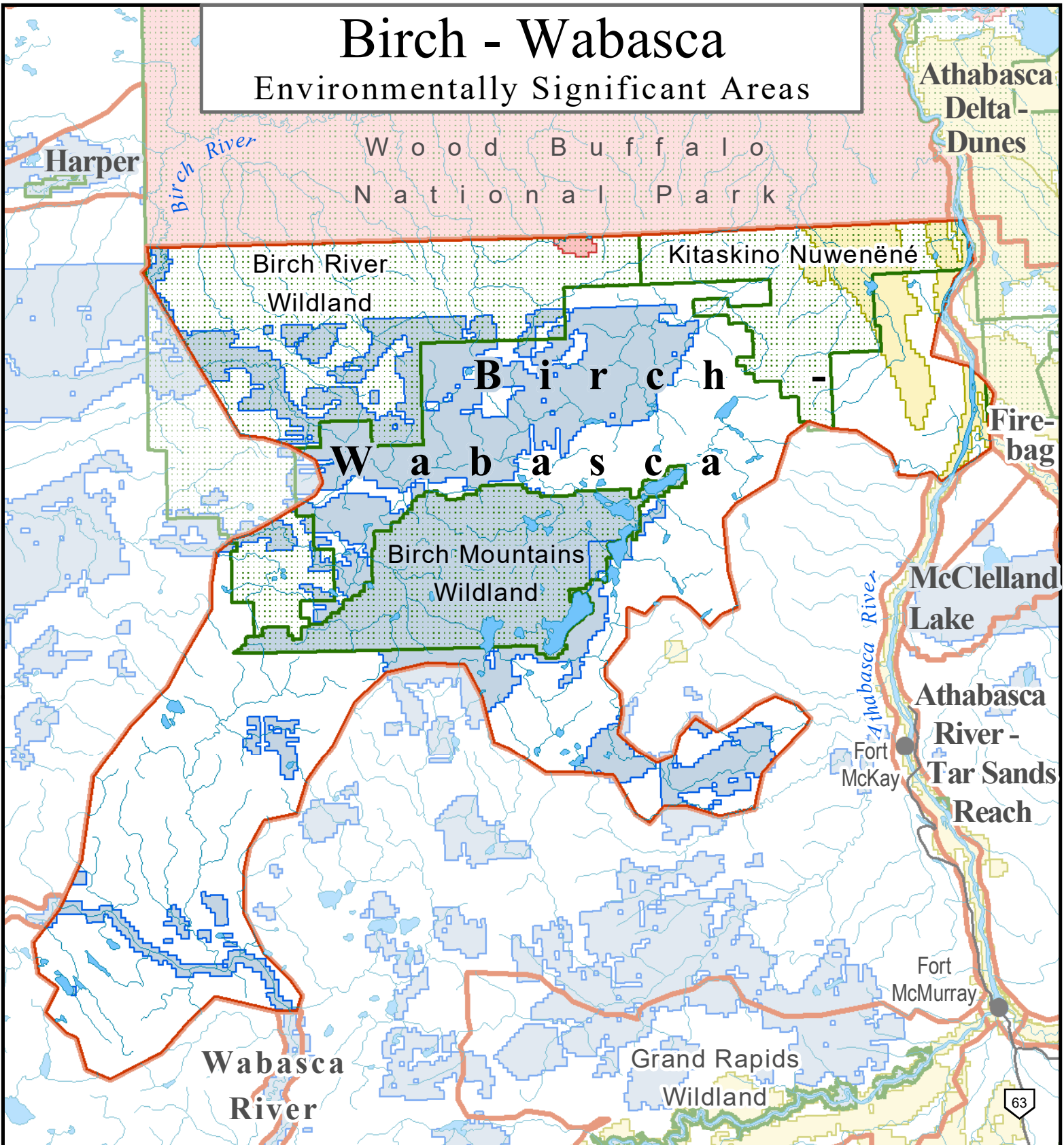


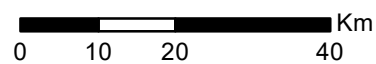
# Birch - Wabasca

## Environmentally Significant Areas



Alberta Wilderness Association

Projection: 10TM (NAD 1983)  
 Data Sources: AltaLIS, Alberta Wilderness Association, Alberta Community Development, Miistakis Institute of the Rockies, and Geogratis - Natural Resources Canada  
 Cartographer: S. Nichols (Revised: November, 2019)



**Environmentally Significant Areas**

- Internationally Significant
- Nationally Significant
- Provincially Significant