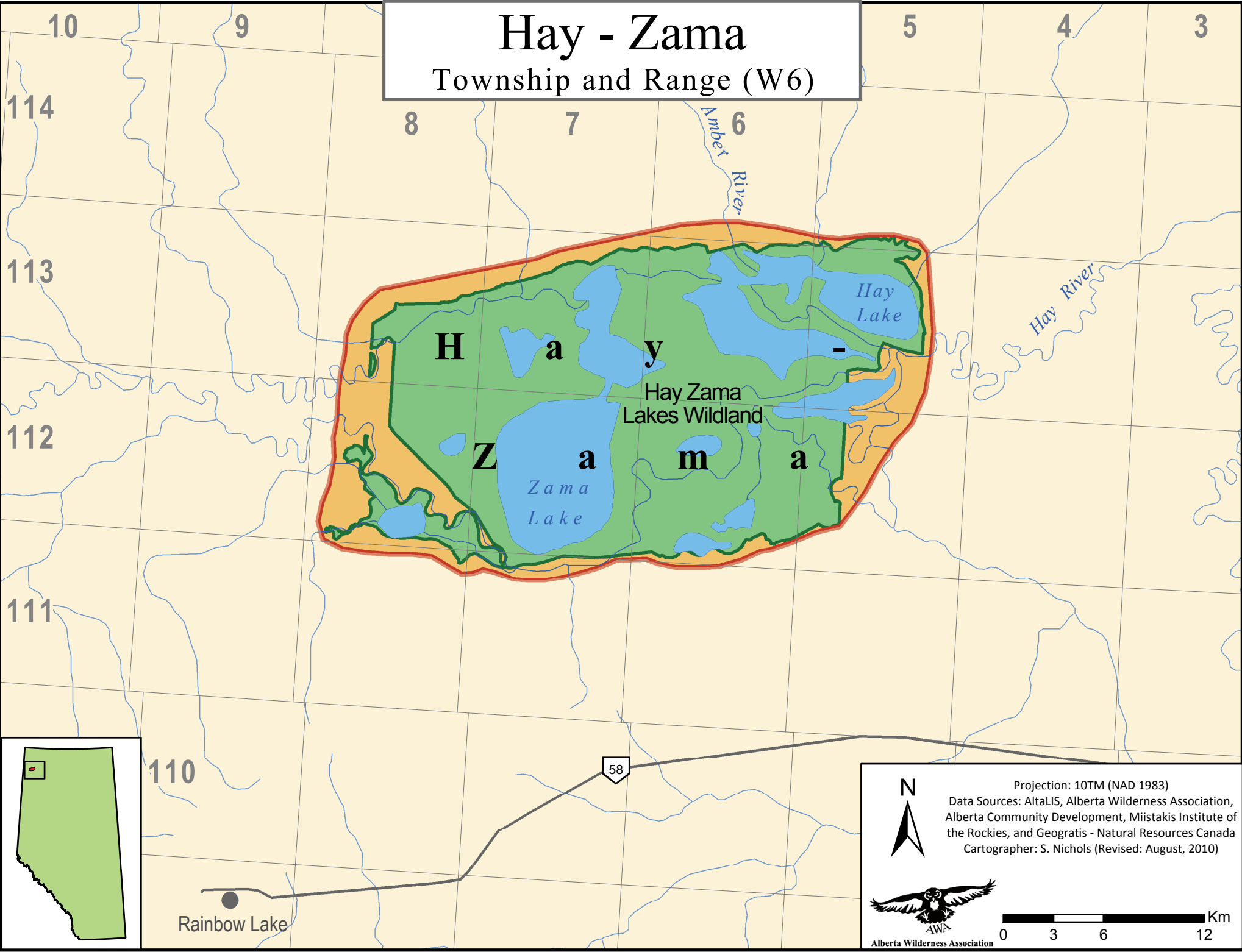


Hay - Zama

Township and Range (W6)



Projection: 10TM (NAD 1983)
Data Sources: AltaLIS, Alberta Wilderness Association,
Alberta Community Development, Miistakis Institute of
the Rockies, and Geogratix - Natural Resources Canada
Cartographer: S. Nichols (Revised: August, 2010)



0 3 6 12 Km