



**Release Date:** August 12, 2013

## **Alberta Defers Forestry in One Caribou Herd Range**

Alberta has halted logging for one year in a significant part of the Little Smoky caribou range, one of fifteen caribou herds on provincial lands, to allow range plan development that will protect critical habitat and recover the caribou population. The newly approved forest management plan for Alberta Newsprint Company (ANC) requires a one year deferral across the Little Smoky herd range northeast of Jasper National Park. However, intensive logging so far remains within ANC's newly government-approved 10 year harvest plan in the adjacent A La Peche caribou herd's critical habitat. Alberta Wilderness Association (AWA) welcomes the Little Smoky logging decision by the Redford government as another good step in the survival chances of this caribou herd.

"We appreciate the Redford government's leadership in taking a step that previous Alberta governments have refused to take, to defer new logging in much of the Little Smoky when caribou there are already far past the disturbance levels they can tolerate," says Carolyn Campbell, conservation specialist at AWA. "This also follows a significant deferral of new oil and gas rights sales in the Little Smoky and A La Peche ranges. It is unfortunate that the logging deferral is only for one year and that logging in A La Peche critical habitat remains approved. We will urge Alberta in upcoming discussions on range planning to also defer logging in the A La Peche area. We continue to press government and industry to implement other measures to restore caribou populations and their ranges in Alberta."

The federal government's boreal woodland caribou strategy, finalized in October 2012, mandates that provinces will develop range plans for woodland caribou survival. Alberta is set to launch in late August a multi-stakeholder advisory process for the Little Smoky and A La Peche ranges. The federal strategy states that plans must describe how critical habitat will be protected to attain a minimum of 65% undisturbed habitat over time, and provide a range-specific path forward for the recovery of that caribou population.

Industrial disturbance of caribou habitat is recognized as the underlying driver of steep declines in Alberta's caribou populations. The Little Smoky range currently has less than 5% undisturbed habitat. This logging deferral decision affects one of the fifteen Alberta caribou populations on provincial lands.

**For more information:**

Carolyn Campbell, AWA Conservation Specialist (403) 283-2025

Attachments: Three maps illustrating range areas, Little Smoky logging deferral, and logging plans not yet deferred in adjacent A La Peche caribou range

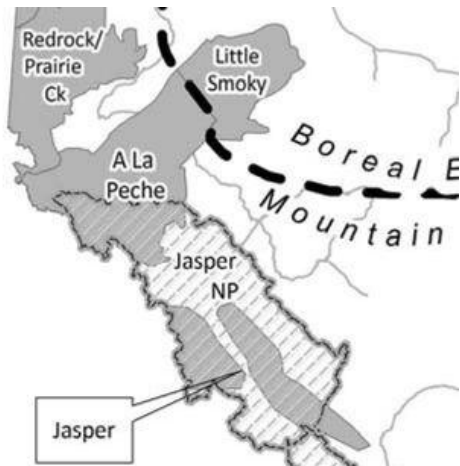




Caribou impacts of Alberta Newsprint Co. Detailed Forest Management Plan approved July 15, 2013

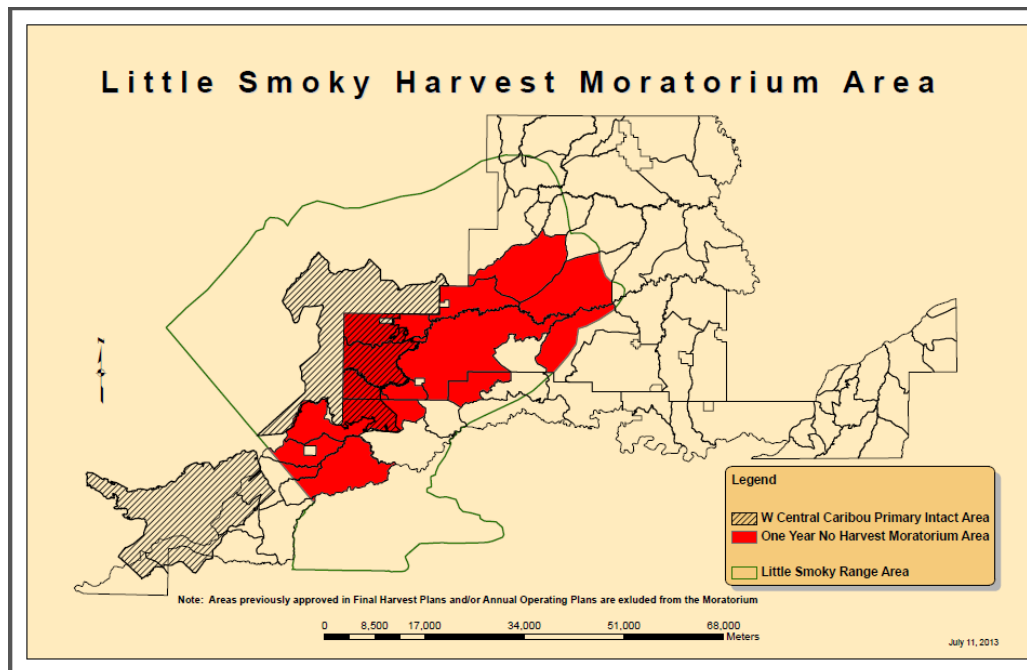
Map Supplement - map sources cited in endnotes

Map 1 - Ranges of A La Peche and Little Smoky caribou populations in west-central Alberta



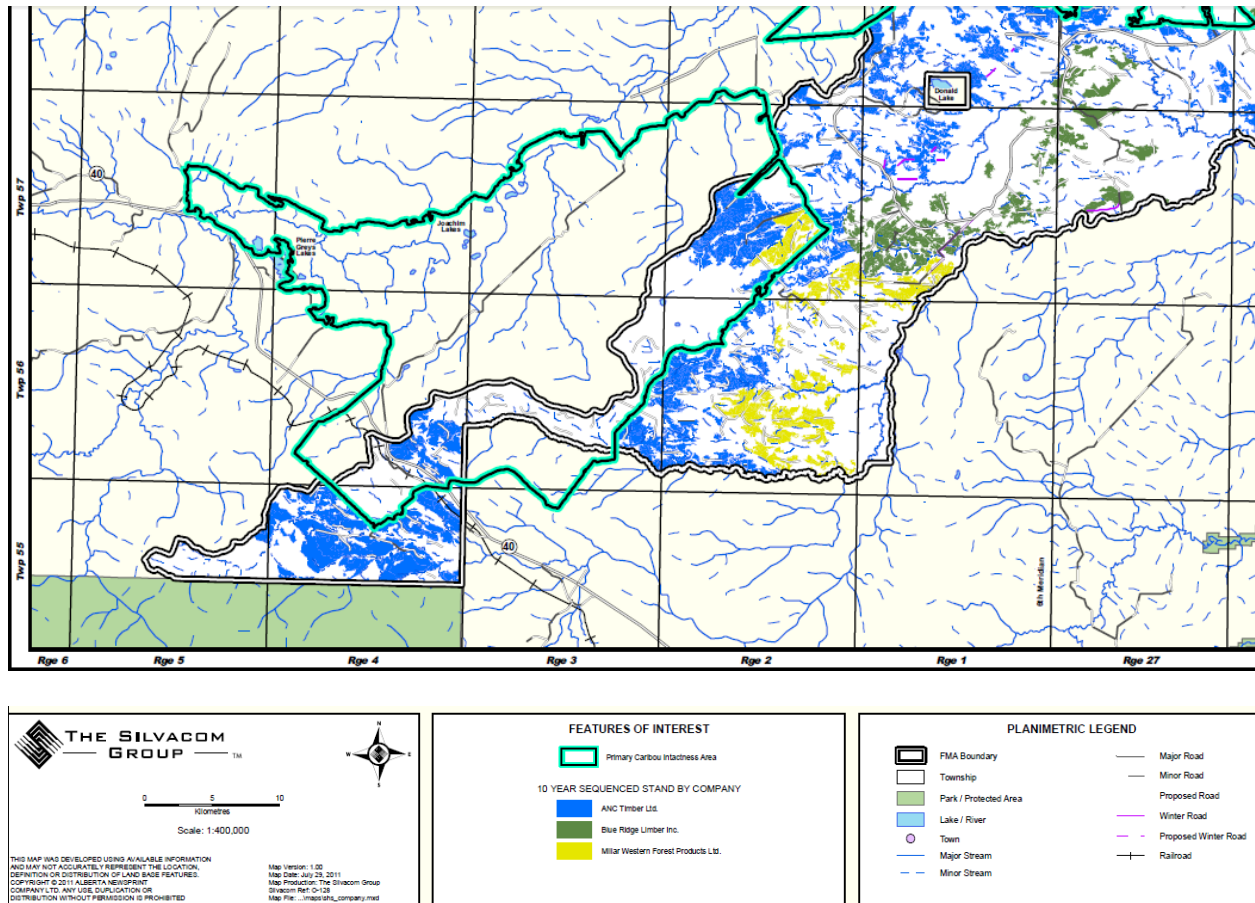
Map 2 – Alberta Newsprint Co. One Year Deferral Area in Little Smoky caribou range

- excellent news for Little Smoky caribou population
- absence of deferrals on A La Peche caribou range to south west concerning, since newly approved 10 year spatial harvest sequence includes intensive harvest (see maps below)





Map 3 – Detail of newly approved 10 year Spatial Harvest Sequence map in A La Peche range.  
Green shaded area is Willmore Wilderness Area. Green outline is most intact range area. Near-term planned harvest will heavily impact corridor to Willmore and currently intact areas.



(partial legend)

Map 1 source: Alberta Government (2010). Status of the Woodland Caribou, p. 3  
[www.srd.alberta.ca/FishWildlife/SpeciesAtRisk/DetailedStatus/Mammals/documents/Status-WoodlandCaribou-inAlberta-Jul-2010.pdf](http://www.srd.alberta.ca/FishWildlife/SpeciesAtRisk/DetailedStatus/Mammals/documents/Status-WoodlandCaribou-inAlberta-Jul-2010.pdf)

Map 2 source: ANC Timber Ltd. Forest Management Plan Approval, July 15, 2013 p. 4  
<http://srd.alberta.ca/LandsForests/ForestManagement/ForestManagementPlans/documents/ANCTimber/ANC-ForestMgmtPlanApproval-Jul29-2013.pdf>

Map 3 source: Alberta Newsprint Company (Aug. 2, 2011). Detailed Forest Management Plan. Map: "10 Year Spatial Harvest Sequence by Company" p. 6-86.  
<http://srd.alberta.ca/LandsForests/ForestManagement/ForestManagementPlans/documents/ANCTimber/ANC-ForestMgmtPlan-Jul29-2013.pdf>

