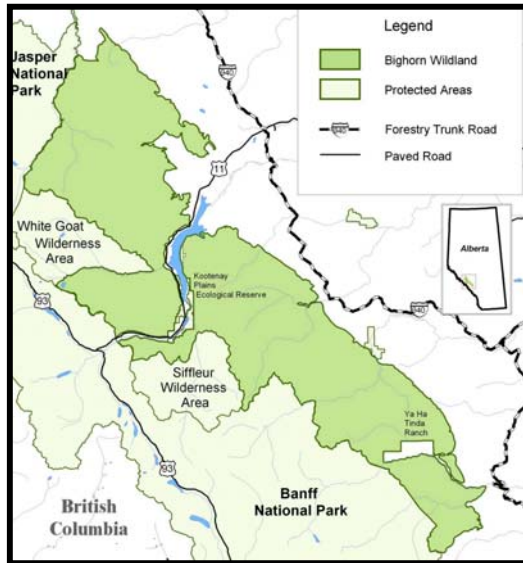




BIGHORN WILDLAND

The **Bighorn Wildland Recreation Area** was designated in 1986, but the legislation has never been put in place.



FEATURES

The Bighorn Wildland contains crucial and irreplaceable habitat for grizzlies and other wildlife. Its watersheds provide clean drinking water to central Alberta, Manitoba, and Saskatchewan. Backcountry recreation opportunities are among the best in Alberta.

THREATS

- **Oil and gas development** is imminent: leases have been sold to major oil companies.
- **Motorized recreation** threatens wildlife, water and backcountry recreation opportunities.

POLICIES & LEGISLATION

Eastern Slopes Policy (1977/1984)

- Eastern slopes zoned to resolve land use conflicts.
- All users accommodated in appropriate areas.
- Based on extensive public consultation.
- The Bighorn Wildland is zoned as “Prime Protection” and “Critical Wildlife” zones.

Prime Protection Zone: “to preserve environmentally sensitive terrain and valuable aesthetic resources”. Industrial development and ORV use prohibited.

Critical Wildlife Zone: “to protect wildlife populations by protecting habitat that is essential to those populations”. Industrial development and ORV use allowed.

Integrated Resource Plan (1986)

- Applies the Eastern Slopes Policy and reaffirms the Prime Protection and Critical Wildlife zoning.

Forest Land Use Zones (1986/2002)

- A law used to regulate access
- **1986:** Zones placed on approx. 1/3 of the Bighorn Wildland to legally prohibit ORV and snowmobile use.
- **2002:** Six new FLUZ created for the entire Bighorn Wildland. ORVs and Snowmobiles are now legally allowed in some areas, in direct contravention of the government’s own Eastern Slopes Policy.





AWA POSITION

- The Bighorn Wildland, as defined in 1986 by the government of Alberta, must be protected under legislation
- No surface access for industrial development within the Wildland
- No motorized recreation within the Wildland
- Ecologically Significant Areas (ESAs) in adjacent lands must be placed under moratorium (no surface disturbance) until proper assessment has been conducted to identify areas requiring protection.



WHAT IS A WILDLAND PARK?

Wildland Park protection is regulated under Alberta's provincial legislation.

“Wildland Parks are large, undeveloped areas where visitors can experience the beauty of unspoiled wilderness and the challenge of self-reliance”.

Traditional activities including hiking, horseback riding, backcountry camping, hunting and fishing are permitted in Wildland Parks.

ACTION

Your letters, postcards and phone calls will make a difference.

- Let the Premier and your MLA know what you think.

Hon. Ralph Klein

307 Legislature Bldg,
10800 – 97 Ave.
Edmonton, AB T5K 2B7

To find your MLA, call 310-0000

Letter writing hints

- Original, handwritten letters are most effective;
- Always include your full name and address in your letters;
- Ask for a written response;
- Ask for your concerns to be tabled at the legislative assembly.
- Ask to have the Bighorn legally designated as a Wildland Park, using the 1986 boundaries.
- Ask that oil and gas development as well as motorized recreation be prohibited within the Bighorn.
- Write a letter to your local paper.
- Please forward a copy of your letter to the AWA.
- Visit www.AlbertaWilderness.ca. AWA's website will provide detailed background information about the Bighorn. Click on the Action Centre icon and send a free fax directly to the Premier.

