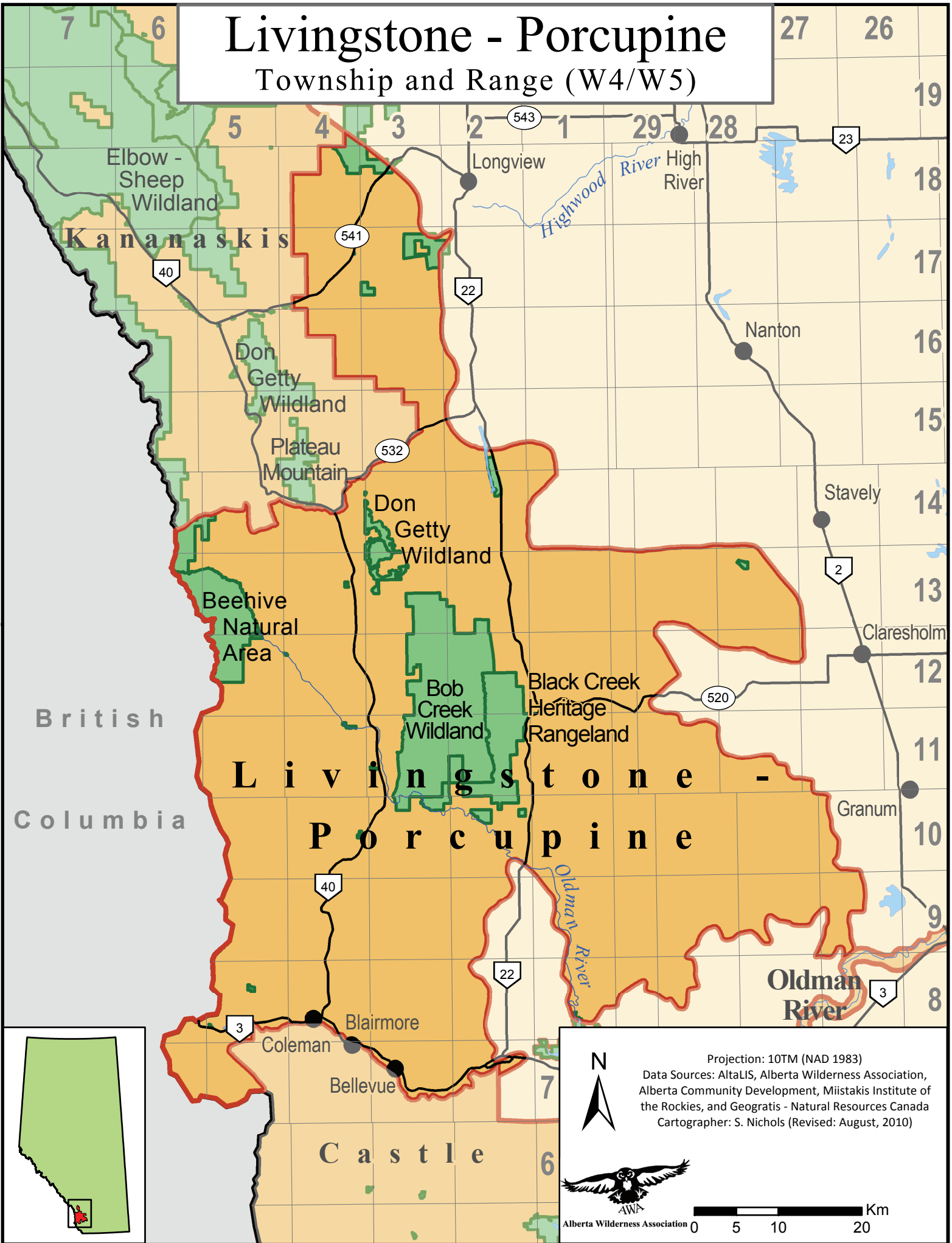


Livingstone - Porcupine

Township and Range (W4/W5)



British
Columbia

**L i v i n g s t o n e -
P o r c u p i n e**

C a s t l e

**Oldman
River**



Projection: 10TM (NAD 1983)
Data Sources: AltaLIS, Alberta Wilderness Association,
Alberta Community Development, Miistakis Institute of
the Rockies, and Geogratis - Natural Resources Canada
Cartographer: S. Nichols (Revised: August, 2010)



0 5 10 20 Km